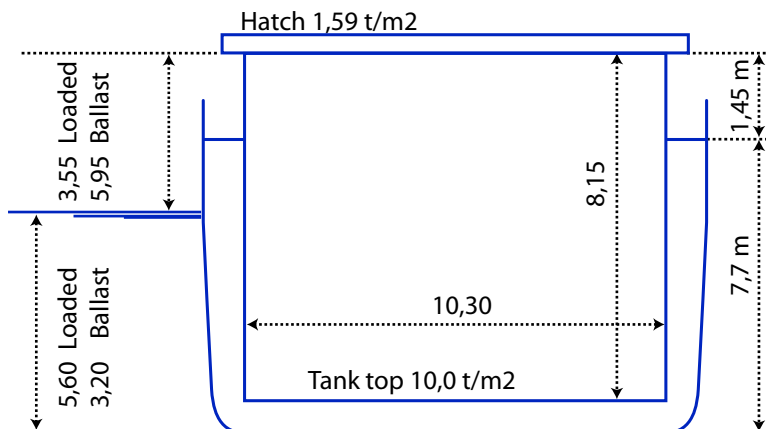
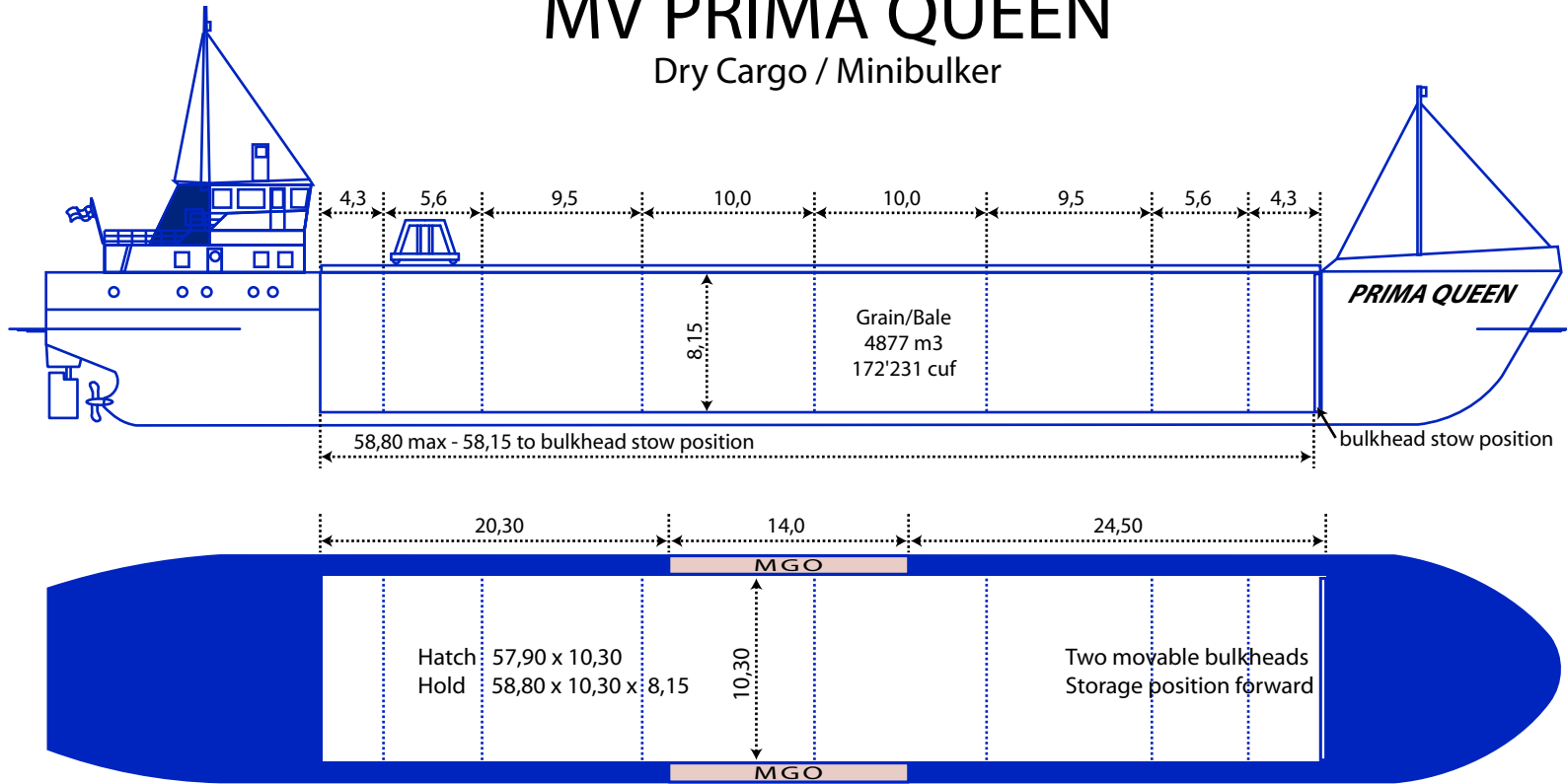


# MV PRIMA QUEEN

## Dry Cargo / Minibulker



### Ship's contacts

Tel/GSM: +358 40 175 7506  
E-mail: queen@primas.fi

### Owner

Prima Shipping Oy Ab  
Tolkkisten Satamatie 9  
FI-06750 Tolkkinen  
FINLAND  
tel. info@primas.fi  
chartering@primas.fi  
www.primas.fi  
+358 19 521 1100

### Particulars

Name: mv Prima Queen  
Call sign: OJSH  
IMO Nr: 9194282  
Flag: Finland  
Home port: Borgå  
Built: 2000  
Builder: Daewoo Mangalia / Romania  
Class: RINA  
Ice Class: Strengthened for Heavy Cargo  
P&I: Finnish/Swedish Ice 1B  
Alandia

### Measurements

GT: 2450  
NT: 1293  
DWCC Summer: 3600  
DWCC Winter: 3500

### Main dimensions

LOA: 87,89  
LPP: 84,93  
Breadth: 12,30  
Depth mld: 7,65  
Draft: 5,6  
Airdraft: 25,5 (loaded)

### Cargo hold

Grain/Bale: 4877 m3 / 172'231 cuf  
Containers: 144 TEU  
Tank top: 10,0 t/m2  
Hatch: 1,59 t/m2

### Propulsion

Main Engine: Cat 3516 B  
ME Output: 1492 kW  
Bowthruster: Yes, 350 kW  
Propeller: Solid screw propeller LB10  
Speed (ballast): 11 kn  
Speed (loaded): 10 kn  
Consumption: 6,0 m3 / day MGO

### Tankcapacity

Ballastwater: 1624 m3  
MGO: 193 m3